



# MENOMONEE FALLS INDEPENDENCE DAY PARADE

If you have questions, **call Steve Fleming at (262) 385-6499** – do not email your questions as the mailboxes may not be monitored during this time.



MENOMONEE FALLS INDEPENDENCE DAY PARADE  
PRESENTED BY THE OPTIMIST CLUB

## Participant Procedure Information & Line Up Order

**Line Up Begins at 4:30 PM**

Monday, July 3, 2023 | Parade Starts 7:00 PM Sharp

(Approximate distance 1.1 miles)

**FIND YOUR GROUP NAME, LINE UP NUMBER AND THE LINE UP STREET  
AT THE END OF THIS DOCUMENT**

### **IMPORTANT NOTE: Appleton Ave will close at 4:30 PM to all traffic**

Access the parade line up area from Lilly Rd or Pilgrim Rd.

- **Lilly Road Access:** Proceed west On Menomonee Ave to your line up street.
- **Pilgrim Road Access:** Take Pilgrim Road to Menomonee Avenue
- Thomas Dr, Elm Lane And Manhattan Dr Are Across from Bethlehem Lutheran Church, please refer to map for details.

### **Marching Interval Between Units**

Please **AVOID GAPS** in the parade. Units in front make sure your there is not a large gap, stay close to the unit in front of you. **Be careful that any performance you do does not stop the parade's flow.** Volunteers will be stationed along the parade route to help keep the parade moving. It is imperative that you keep pace with the unit ahead of you. **Walkers must stay within your group's area – not ahead or behind.**

### **Favors & Candy:**

**No favors, candy, etc. are to be tossed from any moving vehicles, floats, or autos.** Favors or candy may only be distributed at street level within 3' of the curb and must be handed to parade spectators. Please follow the rules so no one will get injured stepping on candy in the street. This is imperative. Any group NOT complying will be subject to removal from the parade and not invited back next year.

### **End Of Parade:**

The Parade Ends at the intersection of Merrimac and Eastwood Drive (located at the northeast corner of the High School)

All Bands, Baton & Drum Corps or any other musical group are requested to continue playing to the end of the route at Merrimac and Eastwood Drive.

**PLEASE DO NOT STOP AFTER TURNING OFF OF APPLETON, CONTINUE ALL THE WAY TO THE END. Thank you!!**

*Thank you for marching in the parade! Have fun!*

**Questions? Call Steve at (262) 385-6499**



## MENOMONEE FALLS INDEPENDENCE DAY PARADE



# **Welcome to the 46th Annual Menomonee Falls Independence Day Parade July 3, 2023**

PARADE WILL BE AIRED ON FALLS CABLE ACCESS.  
<https://fallscableaccess.viebit.com/>

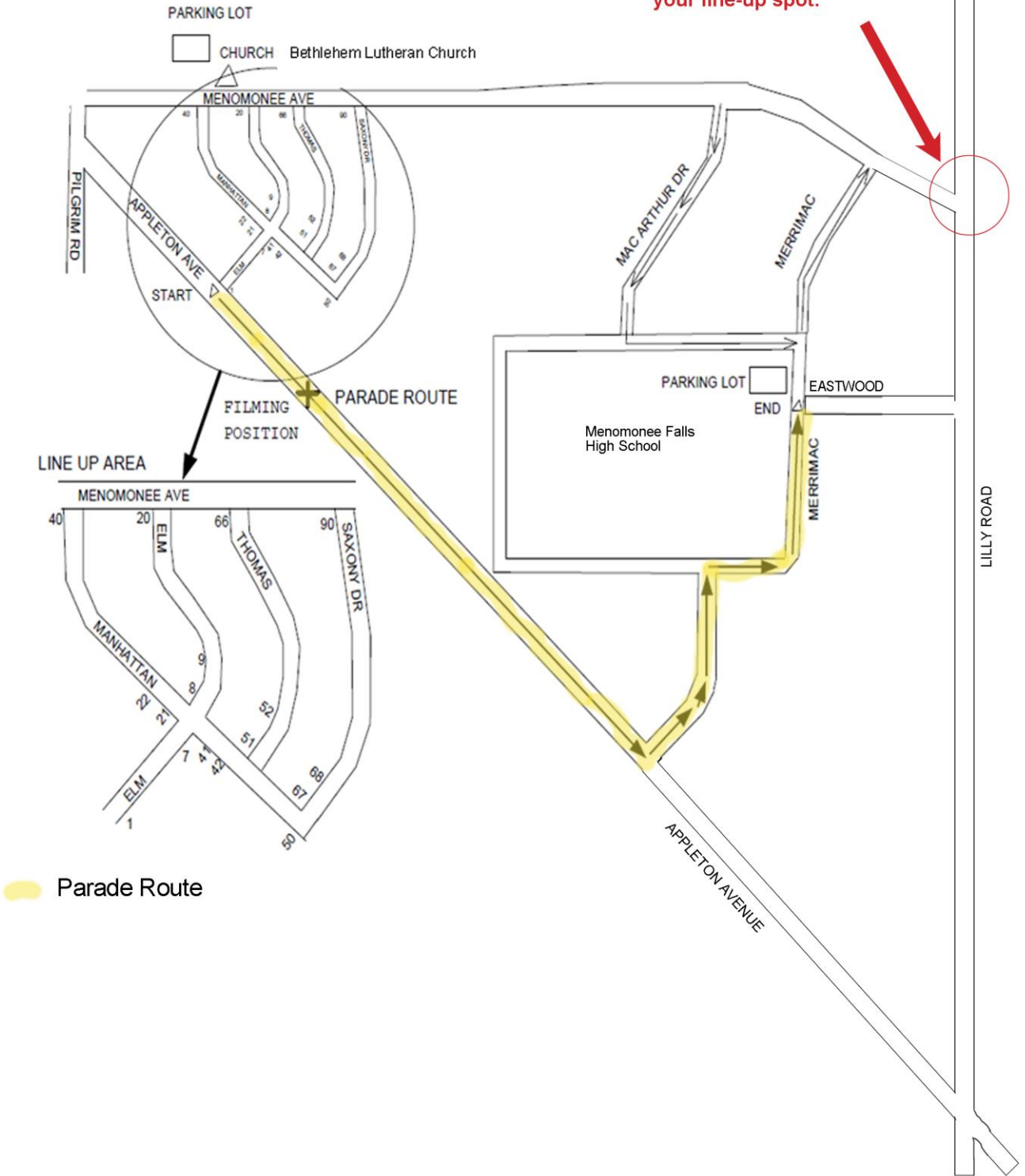
We will be monitoring all units as to their behavior and their ability to keep pace. It is imperative that your group keeps pace with the unit ahead of you. We try to keep the parade moving smoothly, interesting and diversified to keep our 25,000-30,000 spectators entertained and enthused.

Thank you for your participation and cooperation!

*Menomonee Falls Optimist Club Parade Committee*



Enter Menomonee Ave.  
from Lilly Rd. to get to  
your line-up spot.



 Parade Route

## 2023 Menomonee Falls July 3 Parade Line Up (as of 6/2/23)

*Line-up order subject to change*

0	<b>Lilleigh the Clown</b>	Appleton
0	<b>Gerald Friday</b>	Appleton
0	American Legion Riders-Post 382	Appleton
0	Combet Veterans Motorcycle Association	Appleton
1	Henrrizi-Swchneider Post #382 American Legion Color Guard	Elm
2	Parade Banner-Optimist club	Elm
2	Banner Girls-Ava Fleming & Brooklyn Molle	Elm
2	Sponsor Banner	Elm
2	Banner Girls-Scarlett Kleeba	Elm
2	Optimist Club of Menomonee Falls 50 year Float	Elm
3	Pearl Harbor Survivors Ed Miklavric (102 yrs old)	Elm
4	Honorary Veteran Marshall-Emmanual Devera	Elm
4a	Driven by Scott Krause	Elm
5	Stars And Stripe Honor Flight	Elm
6	Menomonee Falls Fire Dept.	Elm
7	Parade Marshall- Tim Newman	Elm
7a	Driven by	Elm
8	Optimist President-Shannon Dietrich	Elm
8a	Driven by Crista Kleeba	Elm
9	Guitars for Vets/ Doc Kiko's outdoor service	Elm
10	Paul Farrow County Executive	Elm
11	State Representative Janel Brandtjen	Elm
12	<b>Hoof Beats</b>	Elm
13	Distinguished Young Women	Elm
14	Congressman Scott Fitzgerald	Elm
15	Griffin Auto Group	Elm
16	<b>Radio Flyer</b>	Elm
17	<b>Lighthouse Brigade of Racine</b>	Elm
18	Art Lounge	Elm
19	<b>Milwaukee Dancing Grannies</b>	Elm
20	<b>610 Stompers from New Orleans</b>	Elm
21	Waukesha County Republican Party	Man(W)
22	<b>Brookfield Civic Band</b>	Man(W)
23	Menomonee Falls Little League	Man(W)
24	Menomonee Falls Historical Society	Man(W)
25	<b>Blue Saints Drum and Bugle Corps</b>	Man(W)
26	Waukesha County Democratic Party	Man(W)
27	Arsenal Engineering/MFHS Robotic Club	Man(W)
27a	Trailer	Man(W)
28	Surge Martial Arts	Man(W)
28a	Trailer	Man(W)

29	Menomonee Falls Food Pantry	Man(W)
30	<b>Janesville Fife and Drum</b>	Man(W)
31	Carpetland Flooring Center	Man(W)
32	Roscoe Milwaukee Admirals Mascot	Man(W)
32a	Driven by Ronnie Hebring Carpetland	Man(W)
33	<b>Daley Debutantes Baton &amp; Drum Corp</b>	Man(W)
34	College Hunks Hauling Junk & Moving	Man(W)
35	<b>Revolutions Twirling Club</b>	Man(W)
36	Johnson Bus	Man(W)
37	<b>Lutheran Vanguard</b>	Man(W)
38	Dale Roeber Corvette	Man(W)
39	Rog Rogers State Farm	Man(W)
40	<b>Spielmannszug Milwaukee</b>	Man(W)
41	Glenroy	Man-E
42	<b>Rocket Cycle-TJ Howell</b>	Man-E
43	<b>Mississippi Mudcats Dixieland Band</b>	Man-E
44	<b>Johnathan Bee- High Wheel Bicyclist</b>	Man-E
45	2023 Ozaukee County Fairest of the fair	Man-E
46	<b>AOK</b>	Man-E
47	Camo Crew Junk Removal	Man-E
48	<b>Tripoli Shrine Clowns</b>	Man-E
49	Menomonee Falls Phoenix Cheer Team	Man-E
50	B Inspired Dance Studio	Man-E
50a	Menomonee Falls Phoenix Varsity & Junior Dance	Man-E
51	Stump Grinding Services	Thomas
52	<b>Dynamite Dance</b>	Thomas
53	Dorshak Tree Specialist	Thomas
53	Falls Baptist Church	Thomas
54	Mosquito Shield	Thomas
55	<b>Milwaukee Metropolitan Community Band</b>	Thomas
56	Shorewest Realtor- Justin Voisin	Thomas
57	<b>River City Rhythm</b>	Thomas
58	Green Light Drivers Education	Thomas
59	Irish setter club of Milwaukee	Thomas
60	Studio VIA-School of Dance	Thomas
61	<b>Tripoli Shrine Motorcorps</b>	Thomas
62	Menomonee Falls Mountain Bike Club	Thomas
63	<b>Big Top Brass</b>	Thomas
63a	<b>Roskopf Towing</b>	Thomas

**Questions? Call Steve at (262) 385-6499, no emails.**